



SPS Fall Reopening Updates 2020-2021

**Dr. Suzanne M. Rice
Chief of Administrative Services
October 8, 2020**

Plan Overview

Covid-19 data

Recommended Plans

Schedules

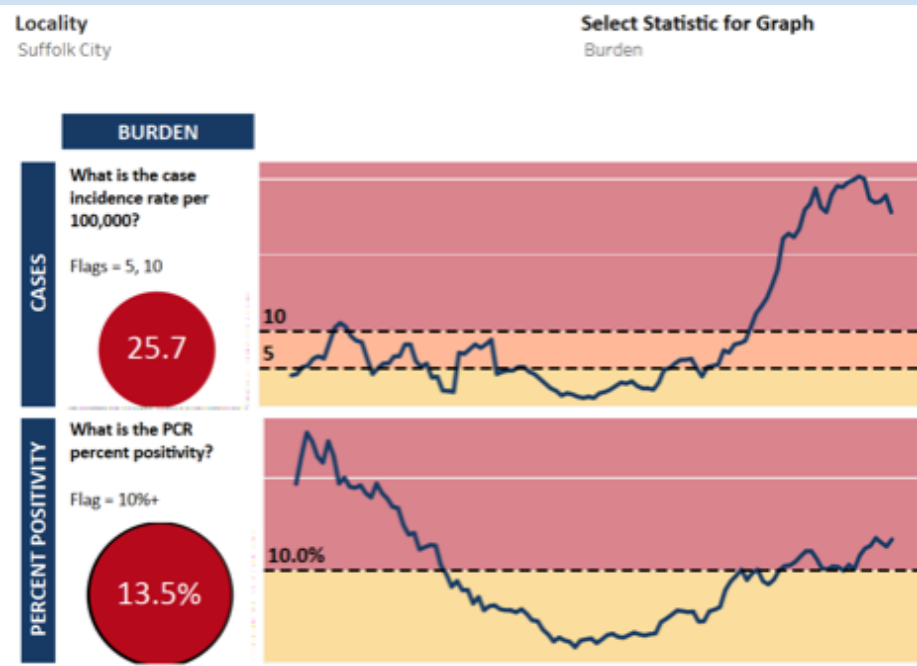
Transportation

Parent Responsibilities

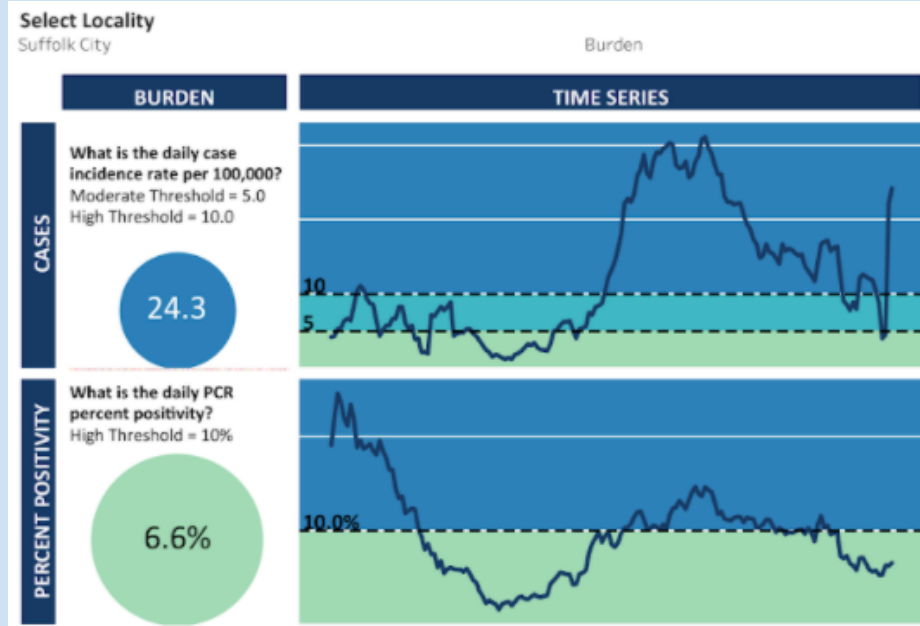
Positive Case Notification

Suffolk City COVID-19 Data

August 3, 2020

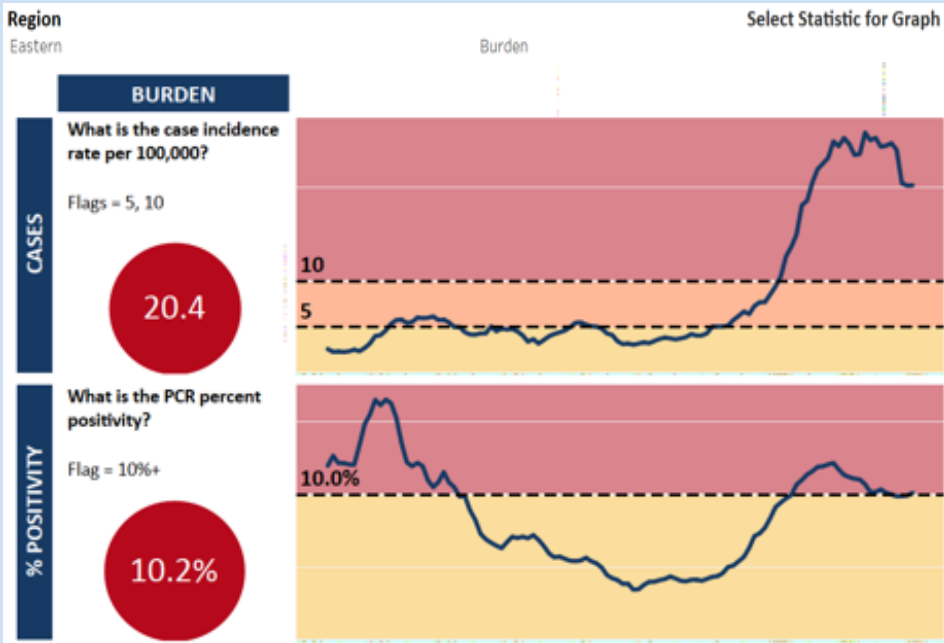


October 5, 2020

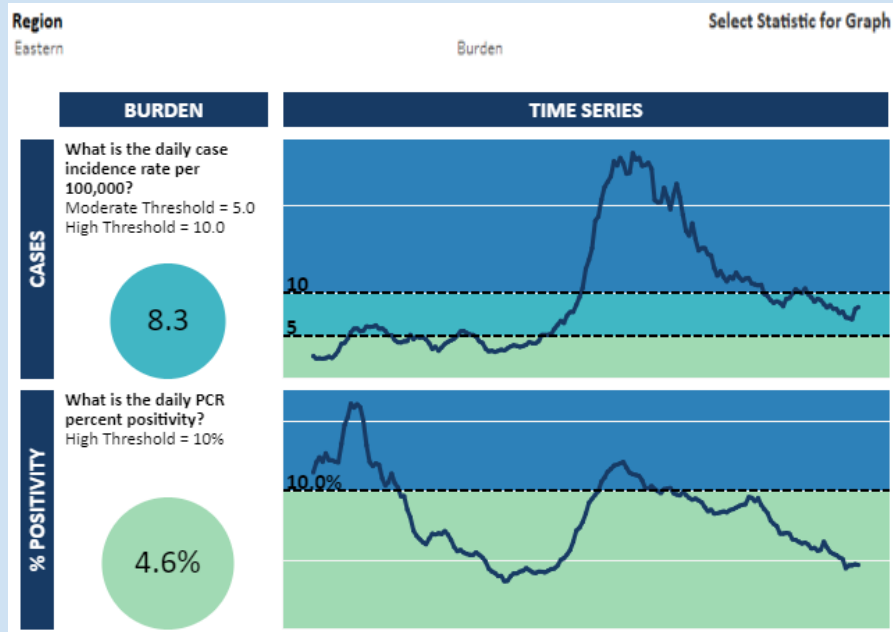


Eastern Region COVID-19 Data

August 3, 2020



October 5, 2020





7-day test positivity rate >10% and/or weekly case incidence rate >100 per 100,000



7-day test positivity rate 5-10% and/or weekly case incidence rate 10-100 per 100,000



7-day test positivity rate <5% and/or weekly case incidence rate <10 per 100,000

***High (red) burden indicates all online learning.**

Moderate (orange) burden indicates hybrid learning.

Low burden (yellow) or no burden (green) would indicate returning to normal schedule.

Eastern Region	August 24th	August 31st	September 7th	September 14th	September 21st	September 28th	October 5th
Cases per 100,000 (7 day average)	11.2	11.6	9.1	9.8	9.2	8.1	8.3
Percent Positivity	8.2%	8.4%	6.7%	6.2%	5.9%	5.2%	4.6%

Suffolk City	August 24th	August 31st	September 7th	September 14th	September 21st	September 28th	October 5th
Cases per 100,000 (7 day average)	16.8	14.1	15.4	17.1	8.6	12.1	24.3
Percent Positivity	9.8%	8.7%	10.1%	10.4%	6.9%	5.9%	6.6%

Regional and local health data is provided to Suffolk Public Schools by the Suffolk Health Department each Tuesday for the prior week (ending on each Monday).

Instructional Task Force Recommendations

Nov.16 PK-5 Hybrid students 2 days per week (Mon/Wed and Tue/Thu)

Special Education program students 4 half days per week

Nov. 30 Grades 6-12 2 days per week (same as above)

CCAP 1 day at base school and 2 days at CCAP

Parent Survey

Oct. 9-12 Parents will receive an email or phone call.

Parents have the option to change Fall Registration response submitted in August.

Oct. 14 Option to change closes. Students will be scheduled based on original Fall Registration choice.

Scheduling

Disaggregate student return options

Hybrid students placed in 2 groups: A and B cohorts

A cohort will attend Mon/Wed and **B** Cohort will attend Tue/Thu

Bus routes created (return to 3 tiers: Middle/High/Elem)

Scheduling

100% Online (virtual) students will return to normal school schedule

Parents notified about child's schedule

Parent Acknowledgement Forms distributed

Bus routes advertised

Sample Virtual Schedule - Elementary

Instructional Schedule	Time
Homeroom Morning Meetings and Warm-up Activities	9:25 A.M. - 9:50 A.M.
Core Integrated Instruction (synchronous or asynchronous)	9:50 A.M. - 10:50 A.M.
Brain Break	10:50 A.M. - 11:05 A.M.
Core Integrated Instruction (synchronous or asynchronous)	11:05 A.M. - 12:05 P.M.
Lunch	12:05 P.M. - 12:45 P.M.
Resource Class--Asynchronous	12:45 P.M. - 1:45 P.M.
Small Group Intervention/Enrichment Independent Practice (Building Specific Schedule)	1:45 P.M. - 3:50 P.M.

Elementary School 9:25-3:50 P.M.
Virtual Model

- Elementary teachers will designate virtual teachers by grade level.
- The 100% virtual teacher teaches all virtual students for that grade level Monday-Thursday following the schedule.
- Virtual and Hybrid students will continue to use Canvas for assignments and materials.
- Resource teachers will provide asynchronous materials for 100% virtual students and bi-weekly instruction for hybrid students.

Sample Virtual Schedules - Secondary

- **Secondary students will return to their tiered block schedules:**
 - **Middle: 7:25 A.M. - 2:00 P.M. High 8:20 A.M.- 3:00 P.M.**
- **Teachers will instruct hybrid students during the first 45 minutes of the block and will instruct virtual students live during the second half of the block.**
- **Hybrid students will work on assignments and projects in class while the teacher conducts live instruction with virtual students.**
- **Teachers who must be 100% virtual will instruct all his/her students (hybrid and virtual) virtually during their regularly scheduled block.**
- **All secondary teachers will be responsible for all of their assigned students.**

Sample Virtual Schedule - Middle School

<u>Virtual Schedule 6th</u>	<u>Virtual Schedule 7th</u>	<u>Virtual Schedule for 8th</u>
Period 1 (Homeroom): 8:15 A.M.-9:00 A.M. (45 min)	Period 1 (Homeroom): 8:15 A.M.-9:00 A.M. (45 min)	Period 1/2: 8:15 A.M.-9:00 A.M. (45 min)
Period 2: 9:05 A.M.-11:10 A.M. (45 min & Lunch) Times will vary based on teacher	Period 2/3 PE/Exploratory: 9:05 A.M.-10:15 A.M. (45 min)	Period 3 (Homeroom): 9:45 A.M.-10:20 A.M. (35 min)
Period 3 12:00 P.M.-12:45 A.M. (45 min)	Period 4 and Lunch 10:20-12:20 P.M. Times will vary based on teacher	Period 4/5: 10:25 A.M.-11:50 A.M. (Exploratory/PE)
Period 4/5: 1:15 P.M.-2:00 P.M. (45 min) PE/Exploratory	Period 5: 1:15 P.M.-2:00 P.M. (45 min)	Period 6/7 and Lunch: 11:55 P.M.-2:00 P.M. (Lunch) Times will vary based on teacher

Sample Virtual Schedule - High School

	ODD/EVEN DAY SCHEDULE
Block 1	1st 8:50 AM-9:15 (25 min)
Blocks 2/3	2/3 10:15 A.M.-11:00 (45 min)
Blocks 4/5	4/5 & Lunch 11:05-1:15 (45 min) Times will vary based on teacher
Blocks 6/7	6/7 2:15 P.M. -3:00 P.M. (45 min)



**Parent Acknowledgement Form
COVID-19 Screening**

Parents are responsible for screening their students daily for symptoms associated with COVID-19.

By sending your child to school you agree to the following:

- I will monitor my child's health for any of the recognized symptoms of COVID-19 and will contact the school nurse if my child develops any of the symptoms set forth below:
 - A fever of 100.4° F or higher
 - A new cough that cannot be attributed to another health condition
 - Shortness of breath that cannot be attributed to another health condition
 - Chills that cannot be attributed to another health condition
 - A new sore throat that cannot be attributed to another health condition
 - A change in my student's senses of smell and/or taste
 - A headache that cannot be attributed to another health condition
 - Muscle or body aches that cannot be attributed to another health condition
- I will not send my child to school if they have symptoms associated with COVID-19.
- I will notify the school nurse immediately if my child comes in close contact with someone who is known to be, or suspected to be, infected with COVID-19.
- I will notify the school administration immediately if my family travels internationally, including cruise ships, or to an area which has returned to stricter regulation than presently in place locally. I understand that my child may be required to remain out of the school until it is determined that the travel does not pose a health concern at school.
- I agree that should my child become infected with COVID-19 or become exposed to someone with COVID-19, the school division, as mandated, will report this to the Suffolk Health Department, who will identify and communicate with employees or individuals considered a contact exposure risk. Steps will be taken to maintain privacy as required by law.
- If my child tests positive for COVID-19 infection or is otherwise diagnosed as infected with COVID-19, I agree to quarantine my child in accordance with federal, state and local health directives.
- If my child becomes ill while at school, I will arrange to have him/her picked up as soon as possible and prior to dismissal OR I may lose the face to face instructional opportunity.

I have read and understand the information I have been provided in the parent communication, and will contact my child's school if I have any questions.

Parent/Legal Guardian/Independent Student Name (PRINT)

Parent/Legal Guardian/Independent Student Name Signature

Date

Transportation

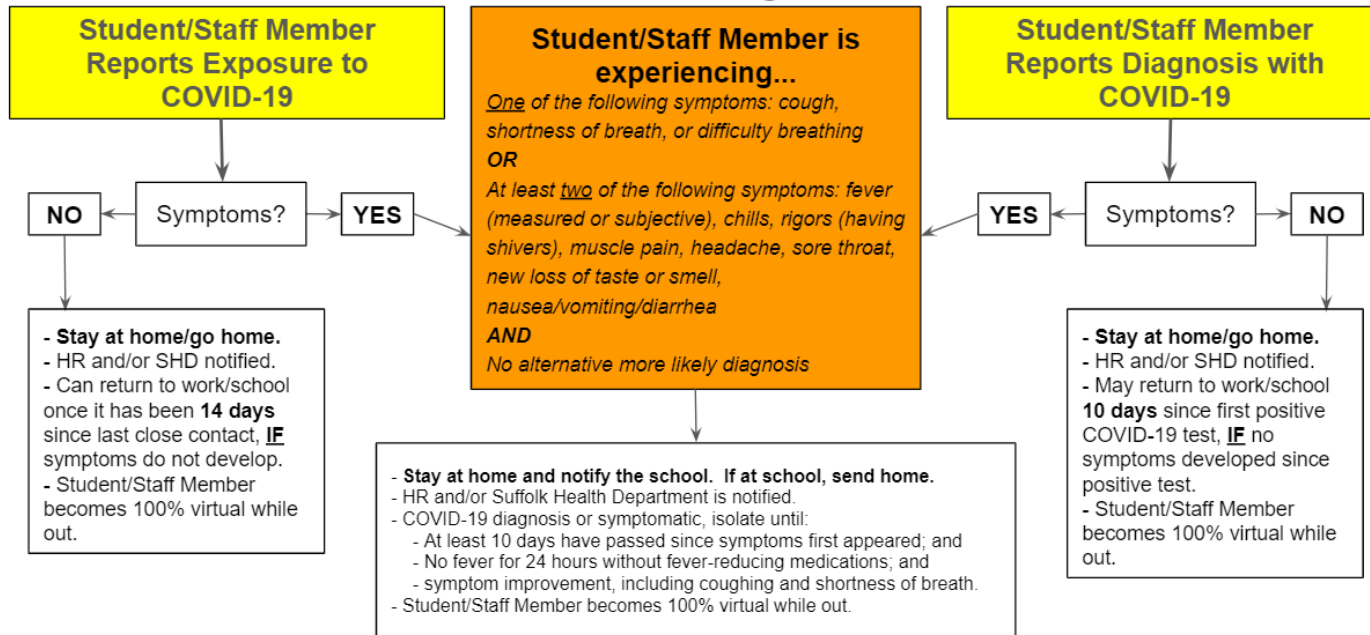
Nov 16 - return to 3 tiers (Middle, High, Elem)

Double runs assigned to Creekside, Hillpoint, Mack Benn Jr, Northern Shores

Level	*Number Transported
Middle 7:25am - 2:00pm	1,918
High 8:25am - 3:00pm	2,419
Elem 9:25am- 3:50pm	2,696

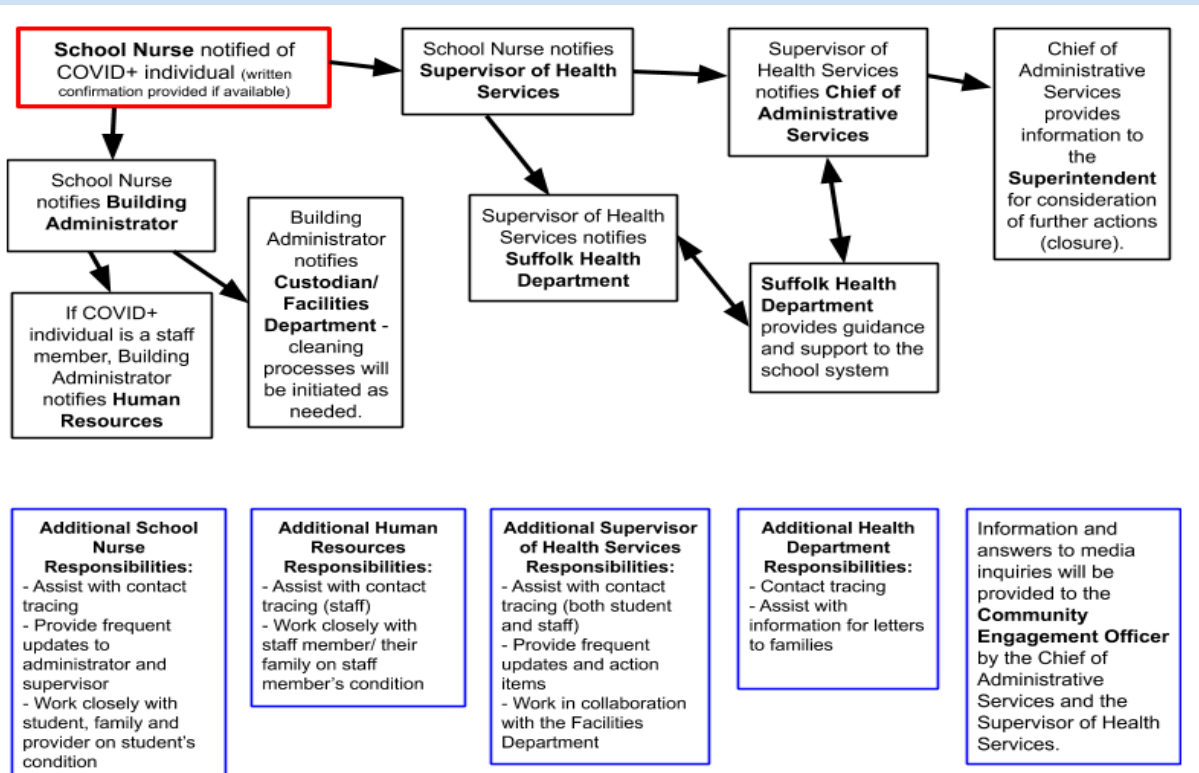
Symptoms or Positive Case Process

Positive Screening Protocol



****If a student/staff member meets the **symptom** criteria above, they will then be considered a probable case and therefore any of their household members working in or attending Suffolk Public Schools will be considered a close contact and sent home also out of an abundance of caution.**

Positive Case Procedures



Positive Case Notification - No Exposure



Insert Date

Dear Parents/Guardians,

We are writing to inform you that a student or staff member in our school has been diagnosed with coronavirus disease (COVID-19). This person was last on school premises on **Insert Date**. Based on information received, the local health department has determined there was no exposure to students or staff while at school.

Although there was no reportable exposure to students or staff while in school, parents/guardians should continue to monitor the health of their household members for COVID-19 symptoms. For more information regarding COVID-19 symptoms, please visit the Centers for Disease Control and Prevention website at www.cdc.gov.

People of any age with certain underlying medical conditions might be at higher risk for severe illness from COVID-19. Anyone with concerns regarding risk factors related to underlying medical conditions is encouraged to reach out to their healthcare provider.

People without symptoms do not need to seek care or be tested. Those who become ill should contact their healthcare provider. If your child has been exposed to or diagnosed with COVID-19, please report this to your school. This information will be kept confidential.

Parents, students and household members can assist our school with reducing viral transmission in an effort to keep our students and school personnel healthy and safe by following these practices:

- Stay home from work or school if sick, even if symptoms are mild. Likewise, avoid contact with people who are sick.
- Wear a face covering in areas where physical distancing is difficult to maintain.
- Cover coughs and sneezes with a tissue (or elbow), and then throw the tissue in the trash. Immediately wash your hands.
- Wash your hands often with soap and water for 20 seconds. If soap and water are not readily available, use an alcohol-based hand sanitizer that contains at least 60 percent alcohol.
- Avoid touching the eyes, nose and mouth with unwashed hands.
- Clean and disinfect frequently touched surfaces.

- Take care of your overall health. Stay current on vaccinations, eat well, and exercise.

More information regarding COVID-19 and mitigation measures can be found in the following resources:

- Centers for Disease Control and Prevention at www.cdc.gov
- Virginia Department of Health at www.vdh.virginia.gov
- Virginia Department of Education at www.doe.virginia.gov
- Suffolk Public Schools at www.spsk12.net

Should you have any further questions please contact the school. Please note that for confidentiality and privacy reasons, we cannot release specific information regarding the infected individual.

Sincerely,

Positive Case Notification - With Exposure



Insert Date

Dear Parents/Guardians,

We are writing to inform you that a student or staff member in our school has been diagnosed with coronavirus disease (COVID-19). This person was last on school premises on **Insert Date** and did have direct exposure with other members of our school community.

The **NAME OF SCHOOL** will **REMAIN OPEN DURING THIS TIME / CLOSE TO ALLOW FOR CLEANING AND DISINFECTION**. We are working closely with the Suffolk Health Department to identify anyone who had close contact with the person to determine if they might have been exposed to the virus that causes COVID-19. If you or a child in your household are identified as having been potentially exposed, the Suffolk Health Department will contact you to ask that you please stay home and monitor for symptoms of cough, shortness of breath, or a temperature higher than 100.4°F, and practice social distancing for 14 days from your last contact. **If you are not contacted by the health department, you do not need to stay home or exclude yourself from activities at this time.**

Parents/guardians should continue to monitor the health of their household members for COVID-19 symptoms. For more information regarding COVID-19 symptoms, please visit the Centers for Disease Control and Prevention website at www.cdc.gov.

People of any age with certain underlying medical conditions might be at higher risk for severe illness from COVID-19. Anyone with concerns regarding risk factors related to underlying medical conditions is encouraged to reach out to their healthcare provider.

People without symptoms do not need to seek care or be tested. Those who become ill should contact their healthcare provider. If your child has been exposed to or diagnosed with COVID-19, please report this to your school. This information will be kept confidential.

Parents, students and household members can assist our school with reducing viral transmission in an effort to keep our students and school personnel healthy and safe by following these practices:

- Stay home from work or school if sick, even if symptoms are mild. Likewise, avoid contact with people who are sick.
- Wear a face covering in areas where physical distancing is difficult to maintain.
- Cover coughs and sneezes with a tissue (or elbow), and then throw the tissue in the trash. Immediately wash your hands.
- Wash your hands often with soap and water for 20 seconds. If soap and water are not readily available, use an alcohol-based hand sanitizer that contains at least 60 percent alcohol.
- Avoid touching the eyes, nose and mouth with unwashed hands.
- Clean and disinfect frequently touched surfaces.
- Take care of your overall health. Stay current on vaccinations, eat well, and exercise.

More information regarding COVID-19 and mitigation measures can be found in the following resources:

- Centers for Disease Control and Prevention at www.cdc.gov
- Virginia Department of Health at www.vdh.virginia.gov
- Virginia Department of Education at www.doe.virginia.gov
- Suffolk Public Schools at www.spsk12.net

Should you have any further questions please contact the school. Please note that for confidentiality and privacy reasons, we cannot release specific information regarding the infected individual.

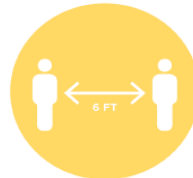
Sincerely,

Primary Mitigation Strategies

Remember the 3 W's...



1. Wear a cloth face covering



2. Wait/Walk 6 feet apart



3. Wash your hands often
or use hand sanitizer